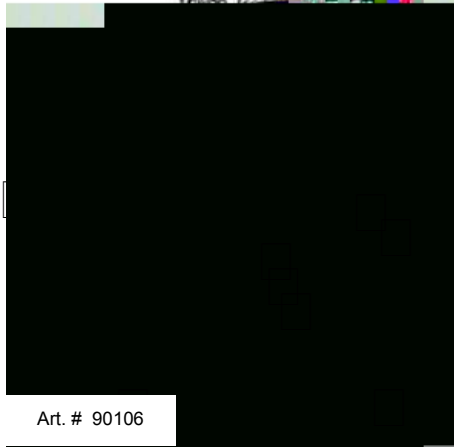


The Wedge can be easily and quickly attached to the rig and is flexible in order to prevent injuries and to allow tight exits. The extra long Velcro® straps will fit a wide variety of rigs and may be cut to suit. Certain rigs may require longer Velcro® straps. Extensions can be supplied upon request.

The actual altimeter is to be attached to the Wedge with the polyester cord and a heavy duty cord lock, or with the original factory supplied back-plate and screws. Digital altimeters like the GFX, Neptune and VISO, will need the LookMa® DigiPouch. Like all other LookMa® Paraphernalia products, the Wedge has also its own initials-label with serial number for quick identification.

- The Wedge ,
- Polyester attachment cord
- Heavy duty cord lock
- Closed cell foam spacer
- Installation recommendation
- DigiPouch+Stiffener Plate (Optional)



Art. # 90106



*The Wedge* :

(and similar)

Route the attachment cord as shown below (see either the Barigo or Altmaster II drawing). As an extra safety measure, tie both ends together and stow remaining cord underneath the elastic band and or Velcro®, whereby the cord lock remains outside as shown below.

(and alike):

Installation by means of the factory supplied back-plate and screws. Place the back-plate on top of the Wedge, there where the altimeter is to be mounted and mark holes with a white pencil. Now separate the webbing at the markings with a blunt needle (a finger-trapping needle will be perfect). Take care not to damage the webbing. Do not use a needle, intended for sewing leather! It will cut the fibers of the webbing.

Place the Altmaster III on the Wedge and hold the back-plate underneath with the webbing in between. Insert the screws and tighten with care (overtightening might damage some plastic altimeter housings).

(GFX, Neptune, VISO and alike):

Slip the plastic stiffener plate into the Velcro® pouch underneath the altimeter support area. Insert your digital altimeter into the LookMa® DigiPouch and place onto the support area. Then attach its hook Velcro® strap with the loop Velcro® underneath and secure with its loop Velcro® strap.



*The Wedge*

1. Route the chest-strap thru the Uni-Loop. If you wish to use the standard "Golden Knights" attachment configuration, then open the Velcro® and remove the Uni-Loop. Then attach the Velcro® so it is flush with the outside edge of the corresponding loop Velcro®.
- 1.1 Use the slotted Uni-Loop for attachment on the chest-strap-buckle side of your rig. (available free of charge when ordered)
2. Route the vertical webbing upwards behind the mud-flap, come down again at the front and attach the vertical loop Velcro® to the horizontal hook Velcro® (shorten if necessary. No fraying will occur!)
3. Then route the horizontal webbing outside around the mud-flap and harness and attach the horizontal loop Velcro® in the front to the hook Velcro® (shorten if necessary. No fraying will occur!).
4. Now secure the unit by pressing the Wedge logo, onto the horizontal loop Velcro®.
5. If required, adjust the length of the elastic / Uni-Loop assembly.
6. If required fold the closed-cell-foam piece to the appropriate thickness in order to align the altimeter for proper vision.
7. Fill out the LookMa® initial-label and note the serial number for later identification.

: Altimeter need a special LookMa® mounting plate.



- While packing your parachute, turn *The Wedge* 90° to the outside, so the rig